



THE RITZ - CARLTON
YACHT COLLECTION

EVIRIMA

DECK PLANS AND SUITE DIAGRAMS





EVRIMA

OUR FLAGSHIP YACHT

With up to 298 guests aboard *Evrima*, taking in the view from your suite's private terrace as you drop anchor off a scenic shoreline. From the aft Marina, you can explore by kayak or paddle board before heading ashore. Five restaurants and six lounges offer an array of culinary delights, while legendary service and luxurious amenities complete the onboard experience.

SUITE CATEGORIES

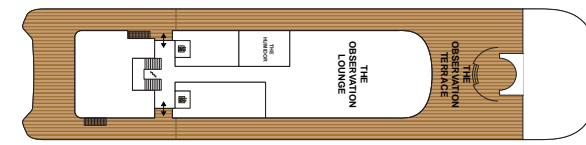
- THE OWNER'S SUITES
- THE VIEW SUITES
- THE LOFT SUITES
- THE GRAND SUITES
- THE SIGNATURE MID SUITES
- THE SIGNATURE SUITES
- THE TERRACE MID SUITES
- THE TERRACE SUITES
- ACCESSIBLE SUITES ♿
- CONNECTING SUITES ↕
- CONVERTIBLE SUITES* ∞

SPECIFICATIONS

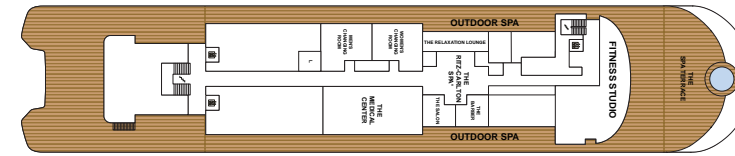
- GUEST CAPACITY _____ 298
- OFFICER AND CREW _____ 246
- TOTAL SUITES _____ 149
- TONNAGE _____ 26,500
- LENGTH _____ 624 FEET / 190 METERS
- WIDTH _____ 78 FEET / 23.8 METERS
- GUEST DECKS _____ 8
- BUILT _____ 2021
- YACHT'S REGISTRY _____ MALTA

**Select Terrace Suites have the ability to convert into an expanded living and dining area or remain a second bedroom when connected to the adjacent suite.

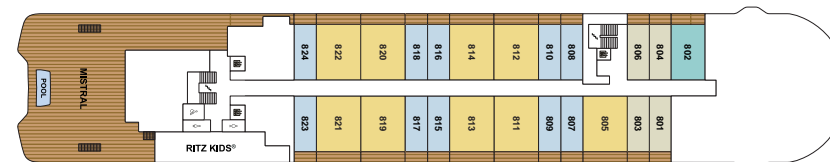
DECK 10



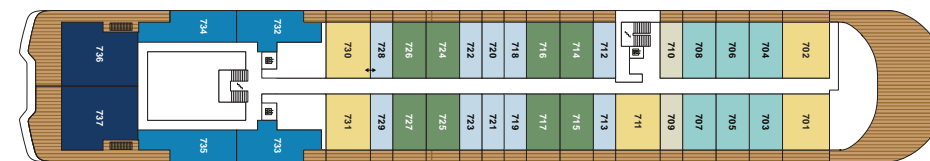
DECK 9



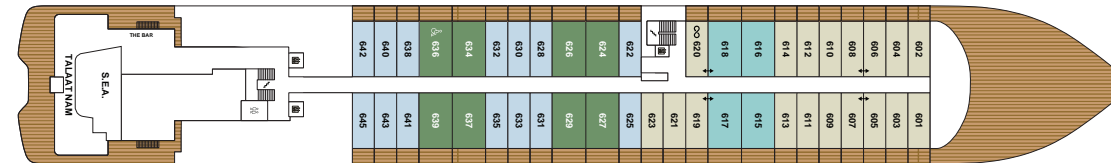
DECK 8



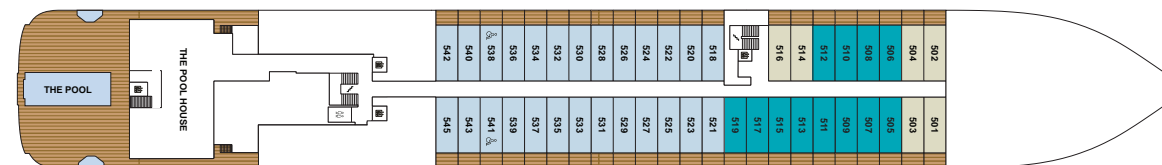
DECK 7



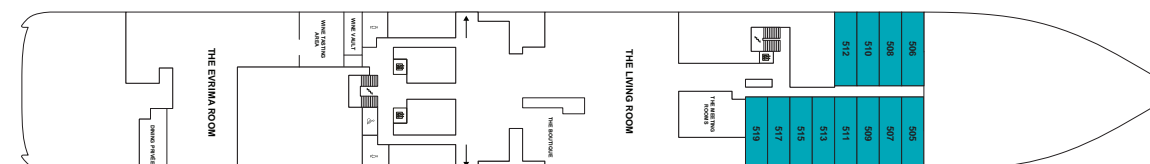
DECK 6



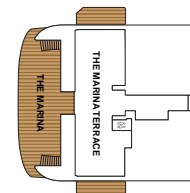
DECK 5



DECK 4



DECK 3



DECK 10

- THE OBSERVATION LOUNGE
- THE OBSERVATION TERRACE
- THE HUMIDOR

DECK 9

- THE GYM
- FITNESS STUDIO
- THE RITZ-CARLTON SPA®
- THE SPA TERRACE
- THE BARBER / THE SALON
- LAUNDERETTE
- THE MEDICAL CENTER

DECK 8

- MISTRAL
- RITZ KIDS®
- SUITES 801 – 824

DECK 7

- SUITES 701 – 737

DECK 6

- THE BAR
- S.E.A.
- TALAAT NAM
- SUITES 601 – 645

DECK 5

- THE POOL HOUSE
- THE POOL
- SUITES 501 – 545

DECK 4

- THE MEETING ROOMS
- THE LIVING ROOM
- THE BOUTIQUE
- THE EVRIMA ROOM
- DINING PRIVÉE
- WINE VAULT
- WINE TASTING AREA
- SUITES 505 – 519 LOWER LEVEL

DECK 3

- THE MARINA TERRACE
- THE MARINA



EVRIMA

SUITES

Wake up every morning relaxed and carefree, from one of our 149 expertly appointed suites. Gaze out over the ocean from your private terrace. Designed to combine the modern elegance of The Ritz-Carlton with the casual luxury of the world's most magnificent super yachts, our suites set a new standard for luxury travel. Furnished with luxurious, state-of-the-art amenities, feel at ease in your private oasis at sea — your Suite Ambassador is standing by to attend to every request with genuine care.

SUITE AMENITIES AND FEATURES

- Access to a Suite Ambassador
- Private oceanview terrace
- Luxury custom king bed sleep system
- Custom luxury bed and bath linens
- Double vanity bathrooms
- Luxury bath amenities
- 24-hour in-suite dining
- Espresso machine with complimentary coffee and teas
- Mini-bar provisioned to your preferences
- Complimentary chilled bottle of champagne upon arrival
- Complimentary Wi-Fi

THE OWNER'S SUITES

The Owner's Suite epitomizes the yachting lifestyle with a wraparound terrace providing constant connection to the sea. In this expansive outdoor space, dine with friends, sunbathe on a chaise, curl up on the sofa with a good book or relax in the whirlpool spa. The interior of the suite is equally inviting with a dining table for six, a living area with a full bar, conversation seating and a guest bath with a shower. Opening onto panoramic ocean views, the bedroom includes two vanity desks and a capacious walk-in closet, along with a master bath that feels like a spa retreat.

TO VIEW VIDEO, CLICK HERE 

SPECIFICATIONS

SUITE SIZE: 1001 SQ FT / 93 SQ M

TERRACE SIZE: 628 SQ FT / 58.3 SQ M

NUMBER OF SUITES: 2

DECKS: 7

AMENITIES

- Large private terrace with private whirlpool
- Modern living and dining area
- Convertible sleep sofa
- Double vanity bathroom with modern soaking tub and separate shower
- Second bathroom with modern shower system
- Walk-in wardrobe
- Digital flat screen televisions
- Double vanity mirror and hair dryer



THE VIEW SUITES

The View Suite fully embraces the scenic vistas just beyond *Evrima's* decks with dramatic floor-to-ceiling glass running the length of the suite. Admire the seascapes while relaxing in the soaking tub, as a French balcony stretches from the bath to the bedroom to the living area where it opens onto a spacious private terrace. A secluded enclave with a second television, the bedroom is completely separate from the living and dining spaces, which are ideal for hosting friends for dinner and a movie.

TO VIEW VIDEO, CLICK HERE 



SPECIFICATIONS

SUITE SIZE: 510 – 544 SQ FT / 47.4 – 50.5 SQ M

TERRACE SIZE: 100 – 123 SQ FT / 9.3 – 11.4 SQ M

NUMBER OF SUITES: 4

DECKS: 7

AMENITIES

- Modern living and dining area
- Dramatic floor-to-ceiling windows
- Convertible sleep sofa
- Double vanity bathroom with modern soaking tub and separate shower
- Digital flat screen televisions
- Double vanity mirror and hair dryer



THE LOFT SUITES

The upper level of the innovative two-story Loft Suite features a dining table for four, a living area with a full sofa, an outdoor terrace and a powder room for guests, creating the perfect space for socializing or easily converting to an additional sleeping area. With its own separate entrance, the bedroom on the downstairs level is an exclusive private oasis, complete with a spacious master bath, second television and a dressing table overlooking a picture window with views of the sea.

TO VIEW VIDEO, CLICK HERE 



UPPER LEVEL



LOWER LEVEL



SPECIFICATIONS

SUITE SIZE: 587 SQ FT / 54.55 SQ M

TERRACE SIZE: 75 SQ FT / 7 SQ M

NUMBER OF SUITES: 12

DECKS: 4 / 5

AMENITIES

Lower Level:

- Picture window
- Double vanity master bathroom with modern soaking tub and separate shower
- Digital flat screen television
- Double vanity mirror and hair dryer

Upper Level:

- Modern living and dining area
- Convertible sleep sofa
- Powder room
- Digital flat screen television



THE GRAND SUITES

The Grand Suite offers a notable abundance of space, from the expansive private terrace to the luxurious bath with its large walk-in shower, soaking tub and powder room. The bedroom features the convenience of dual walk-in wardrobes, while the airy, light-filled living area includes a dining table that comfortably seats four when you wish to entertain friends. After dinner, step onto the terrace for a nightcap as the moonlight shimmers on the sea.

TO VIEW VIDEO, CLICK HERE 



SPECIFICATIONS

SUITE SIZE: 562 – 570 SQ FT / 52.2 – 53 SQ M

TERRACE SIZE: 107 – 118 SQ FT / 9.9 – 11 SQ M

NUMBER OF SUITES: 14

DECKS: 7 / 8

AMENITIES

- Modern living and dining area
- Double vanity bathroom with modern soaking tub and separate shower
- Dual walk-in wardrobes
- Convertible sleep sofa
- Digital flat screen televisions
- Double vanity mirror and hair dryer



THE SIGNATURE SUITES

The Signature Suite features a comfortable living and dining area flush with light from the floor-to-ceiling windows during the day and perfect for in-suite dinners in the evening. The separate bedroom and bath include not only a double vanity and walk-in shower but also a modern soaking tub for unwinding after the day's exploration. On the private terrace, greet each morning with an alfresco breakfast and return in the afternoon for sunbathing on the chaise.

TO VIEW VIDEO, CLICK HERE 



SPECIFICATIONS

SUITE SIZE: 420 SQ FT / 39 SQ M

TERRACE SIZE: 81 – 114 SQ FT / 7.5 – 10.6 SQ M

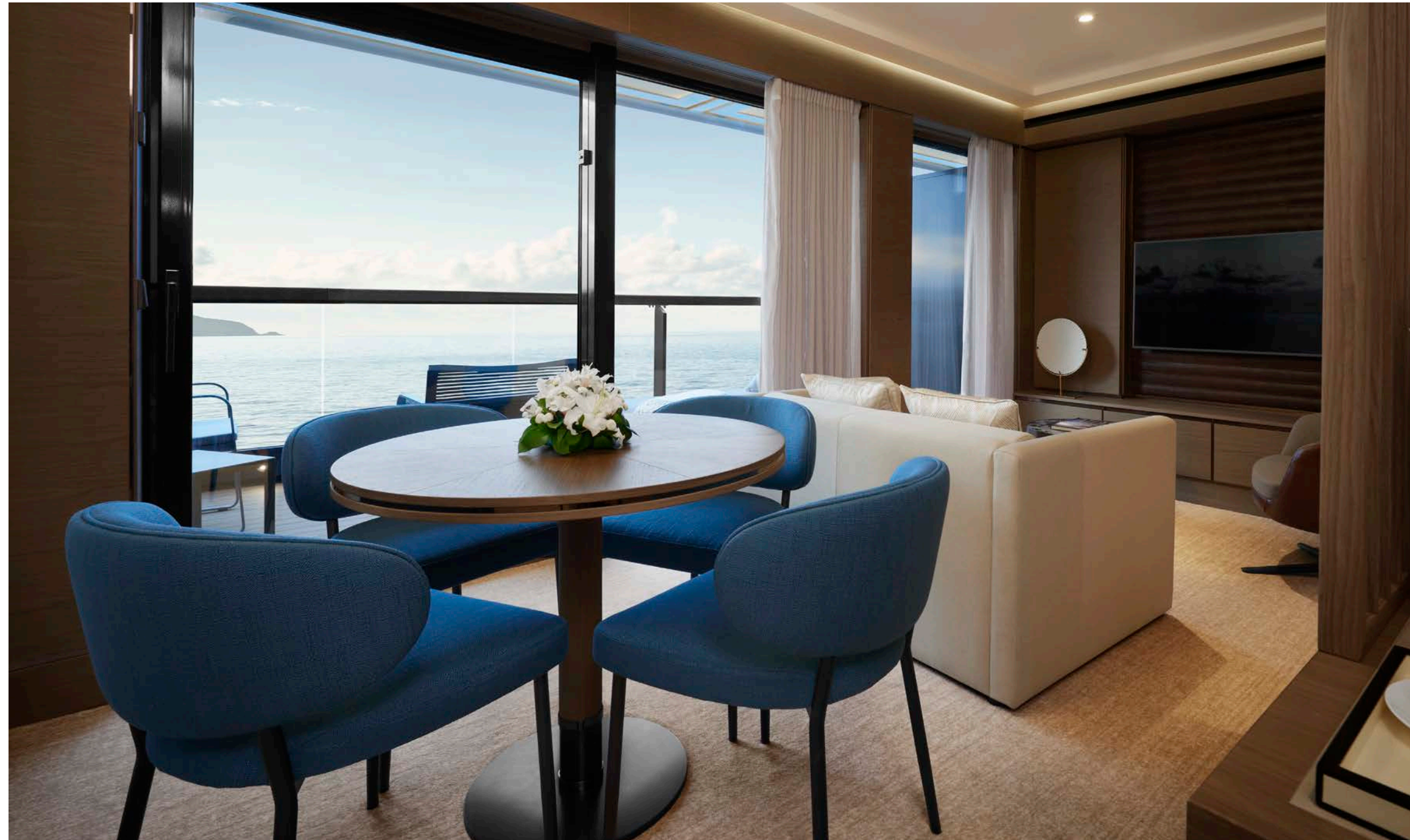
NUMBER OF SUITES: 27

DECKS: 6 / 7 / 8

ADA SIGNATURE SUITE AVAILABLE UPON REQUEST


AMENITIES

- Modern living and dining area
- Double vanity bathroom with modern soaking tub and separate shower
- Convertible sleep sofa
- Digital flat screen televisions
- Double vanity mirror and hair dryer



THE TERRACE SUITES

With a contemporary aesthetic of understated elegance, the Terrace Suite features the exceptional amenities that distinguish all of the suites on board. Just beyond the floor-to-ceiling windows, a private terrace invites you to take in views of coastal harbors and sunsets over the sea, while a custom king bed and spacious bath with a double vanity and modern shower provide a relaxing retreat after adventures ashore. The superlative service of your Suite Ambassador ensures your every need is met with personalized care and attention.

TO VIEW VIDEO, CLICK HERE 



SPECIFICATIONS

SUITE SIZE: 264 – 280 SQ FT / 24.5 – 26 SQ M

TERRACE SIZE*: 53 – 75 SQ FT / 4.9 – 7 SQ M

NUMBER OF SUITES: 90

DECKS: 5 / 6 / 7 / 8

*EXPANDED TERRACE ON DECKS 5 AND 6

ADA TERRACE SUITES AVAILABLE UPON REQUEST

AMENITIES

- Double vanity bathroom with modern shower system
- Two Terrace Suites on board are ADA suites
- Select Terrace Suites have the ability to convert into an expanded living and dining area or remain a second bedroom when connected to the adjacent suite.
- Digital flat screen television
- Double vanity mirror and hair dryer





**THE RITZ - CARLTON
YACHT COLLECTION**

For more information visit
RITZCARLTONYACHTCOLLECTION.COM
or contact your travel professional.